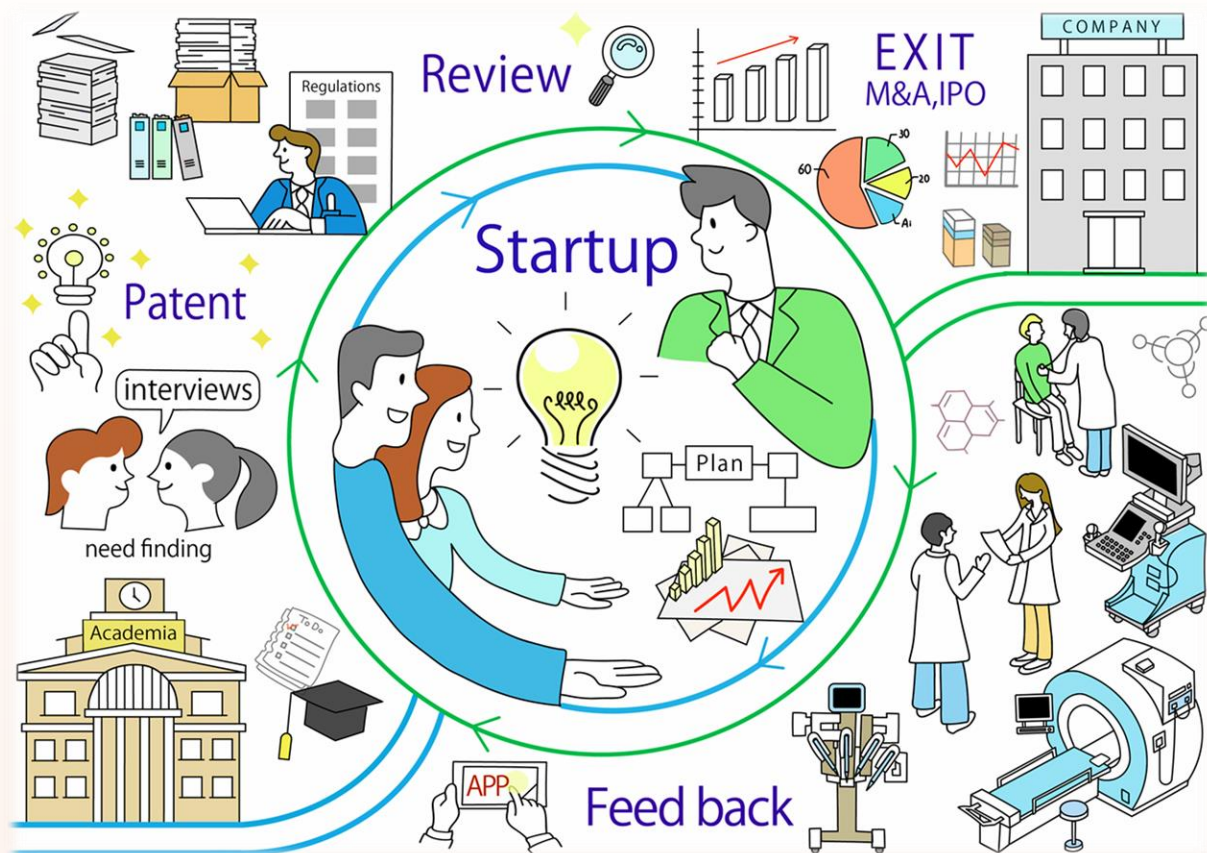


MedTech Entrepreneurship Symposium

Ecosystem development that brings together academia and business



Japanese / English
simultaneous interpretation

June 12, 2024
11:00~15:30 (JST)

Venue: LINK-J Life Science Hub West

(4-1-3 Bingo-machi, Chuo-ku, Osaka-city, Osaka, 541-0051 4F., Midosuji Mitsui building) *Online streaming available

How
to
Apply

Please apply for attendance using the QR code on the right or the application form on the "Event Information" on the website of Medical Center for Translational Research Osaka University Hospital (MTR).

*First-come, first-served basis for same-day participation if capacity is filled.

MTR HP : <http://www.hp-mctr.med.osaka-u.ac.jp/>



Visitor Registration
Deadline: June 3



Web Registration
Available till the last minute

Organized by : LIPS the Photonics Hub, The Life and Medical Photonics Division, Institute for Open and Transdisciplinary Research Initiative, Osaka University
Medical Center for Translational Research, Department of Medical Innovation, Osaka University Hospital

Sponsored by : Kinki Bio-Industry Development Organization, Urban Innovation

Support by : Japan Agency for Medical Research and Development (AMED), Kinki Bio-Industry Development Organization

Biocommunity Kansai, Urban Innovation Institute Life Science Incubation Council

Osaka Business Development Agency, Co-creation Bureau Osaka University

Global Center for Medical Engineering and Informatics Osaka University, Life Science Innovation Network Japan (LINK-J)



PROGRAM

- 11:00~** Opening Remarks
- 11:15~** Special Session
A New Model for Academia-Industry Partnership for Healthcare Innovation
Youseph Yazdi | Executive Director, Center for Bioengineering Innovation and Design (CBID),
Department of Biomedical Engineering, Johns Hopkins University
- 11:40~** Part I: Entrepreneurship
The role of MedTech Startups and necessary point of view for success
Hajime Oshita | CEO, MedVenture Partners
- 12:10~** **Future MedTech Innovation farmwork in Japan for overseas**
Fumiaki Ikeno | Researcher, Stanford University, School of Medicine
Co-Founder, Chief Medical Officer, Medventure Partners, Inc
- 12:40~** Break (Lunch)
- 13:35~** Part II: Initiatives at the University of Osaka
Activity Report for 2023
Hirozumi Sasakura | Specially appointed researchers, Medical Center for Translational Research,
Osaka University Hospital
Yasuaki Kumamoto | Associate Professor, Osaka University Institute for Open and Transdisciplinary
Research Initiatives
- 14:00~** **Pitch for Business**
Naoki Sada | Department of Molecular Neuroscience, Graduate School of Medicine, Osaka university
Toshiaki Kizaki | Management of Industry and Technology, Graduate School of Engineering, Osaka University
- 14:20~** **Initiatives for 2024**
Keiko Fukuta | Specially Appointed Associate Professor, Medical Center for Translational Research,
Osaka University Hospital
- 14:30~** Part III: Panel Discussion
Creating an Ecosystem in Academia for MedTech Development
Larry Nagahara | Vice Dean for Research and Translation, Johns Hopkins University
Fumiaki Ikeno | Researcher, Stanford University, School of Medicine
Co-Founder, Chief Medical Officer, Medventure Partners, Inc
Nao Yoshizawa | CEO, Willsame. Inc
Daisuke Nishiuchi | CTO Office, Terumo Corporation
Program Co-Director, Japan Biodesign
Akira Myoi | Director, Medical Center for Translational Research, Osaka University Hospital
- 15:25~** Closing Remarks

ACCESS

LINK-J Life Science Hub West

4-1-3 Bingo-machi, Chuo-ku, Osaka-shi, Osaka

Midosuji Mitsui Bldg. 4F Conference Room

<https://www.nihonbashi-lifescience.jp/#access>

Honmachi Station [Osaka Metro Midosuji Line and Chuo Line] : 1 minute walk from Exit 2

Honmachi Station [Osaka Metro Yotsubashi Line] : 7 minutes walk from Exit 27

Yodoyabashi Station [Keihan Line] :10 minutes walk from Exit 12

Contact

Medical Center for Translational Research Osaka University Hospital Medical Devices Unit

MAIL : md-unit@dm1.med.osaka-u.ac.jp

